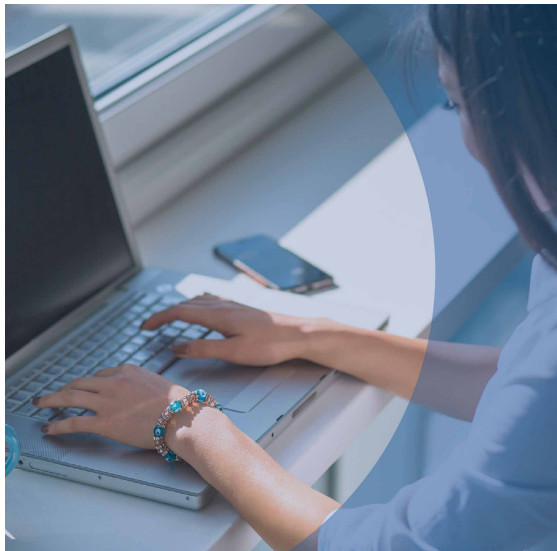


WINDOWS ENVIRONMENT - BEGINNER



GENERAL INFORMATION

OBJECTIVE

Instantly provide the position of the person being assessed in relation to their mastery of the basic options of the Windows environment

CONTEXT

Selection or preselection
Professional development

TARGET CLIENTELE

Positions requiring basic use of the Windows operating system

FORMAT

20 basic multiple-choice questions and practical exercises in the Windows environment

DURATION

30 minutes (timed)

COST

20 \$

LANGUAGES AVAILABLE

French
English

DIMENSIONS ASSESSED

- ▶ Windows environment configuration
- ▶ Use of the workstation
- ▶ Security settings management
- ▶ Troubleshooting on Windows

ADVANTAGES

- ▶ Complete autonomy on Interpreto's user-friendly platform for test administration and report management.
- ▶ Report generated instantly, as soon as the candidate completes the test.
- ▶ In addition to providing the overall result, the results report enables you to identify the candidate's level of proficiency for each skill category.
- ▶ You also get the score awarded to each question passed, as well as the time spent by the candidate on each of the test questions.
- ▶ Results that allow you to adapt your training programs to the needs of your teams.

DEVELOPMENT OF THE TOOL

The Windows Environment - Beginner test is owned and maintained by Isograd/TOSA*

* Tosa is an international standard for the assessment and certification of office and digital skills.