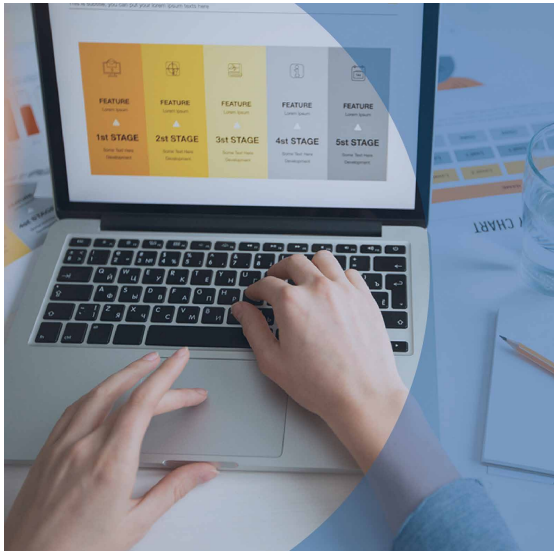


POWERPOINT INTERMEDIATE



WHAT IS THE MICROSOFT POWERPOINT - INTERMEDIATE ONLINE TEST?

The Microsoft PowerPoint - Intermediate online test assesses candidates' skills for regular use of the presentation software. The questions measure their ability to format presentations and manipulate text and visual content in PowerPoint.

GENERAL INFORMATION

OBJECTIVE

Instantly provide the position of the person being evaluated in relation to their mastery of the intermediate functions of the PowerPoint software

CONTEXT

Selection or preselection

TARGET CLIENTELE

Positions that require regular use of the PowerPoint software

FORMAT

20 multiple choice questions and practical exercises at the intermediate level in the PowerPoint environment

DURATION

Maximum duration: 30 minutes (timed)
Average completion time: 15 minutes

COST

20 \$

LANGUAGES AVAILABLE

French
English

DIMENSIONS ASSESSED

- ▶ Themes and templates
- ▶ Graphic objects
- ▶ Text formatting
- ▶ Environment, methods and slideshow

ADVANTAGES

- ▶ Complete autonomy on Interpreto's user-friendly platform for test administration and report management.
- ▶ Report is generated instantly, as soon as the candidate completes the test.
- ▶ In addition to providing the overall score, the results report allows you to identify the candidate's level of proficiency (beginner, basic, productive, advanced, expert) for each skill category, as well as the time spent by the candidate on each of the test questions.

DEVELOPMENT OF THE TOOL

The PowerPoint 2016 - Intermediate test is owned and maintained by Isograd/TOSA*

* Tosa is an international standard for the assessment and certification of office and digital skills.